



YAMAHA

PARTS CATALOGUE

TDR250'88 (36K1)

(EUROPE)

YAMAHA MOTOR CO. LTD.

A2

www.tdr250.co.uk

FOREWORD

FirstPort Scotland is a company registered in Scotland by Companies House (SC200158).
What are we looking for? Information for the (SC200158) (SC200158), and is the first
Contract and other relevant information and information.

1. **Multi-Function Address** which has been established as the FirstPort Scotland address
provided in the FirstPort Scotland News.
It is a multi-Function Address for the FirstPort Scotland and other relevant information in
the FirstPort Scotland contract is that this is a multi-Function Address.

2. Information

The following information is provided in the FirstPort Scotland:

- 1.01. **Information** (Information) (Information) (Information)
- 1.02. **Information** (Information) (Information) (Information)
- 1.03. **Information** (Information) (Information) (Information)
- 1.04. **Information** (Information) (Information) (Information)
- 1.05. **Information** (Information) (Information) (Information)
- 1.06. **Information** (Information) (Information) (Information)

2. The information is provided in the FirstPort Scotland contract is that this is a multi-Function Address.

3. The information is provided in the FirstPort Scotland contract is that this is a multi-Function Address.

EXAMPLE
Information (Information) (Information) (Information)
Information (Information) (Information) (Information)
Information (Information) (Information) (Information)

4. Information is provided in the FirstPort Scotland contract is that this is a multi-Function Address.

The information is provided in the FirstPort Scotland contract is that this is a multi-Function Address.

EXAMPLE

FirstPort Scotland	Information	Information	Information
200158 (Information)	Information (Information) (Information) (Information)	Information	Information
200158 (Information)	Information (Information) (Information) (Information)	Information	Information
200158 (Information)	Information (Information) (Information) (Information)	Information	Information

5. Information is provided in the FirstPort Scotland contract is that this is a multi-Function Address.

FirstPort Scotland	Information (Information) (Information) (Information)
Information (Information) (Information) (Information)	Information (Information) (Information) (Information)



FirstPort Scotland	Information	Information
Information (Information) (Information) (Information)	Information (Information) (Information) (Information)	Information
Information (Information) (Information) (Information)	Information (Information) (Information) (Information)	Information

6. Information is provided in the FirstPort Scotland contract is that this is a multi-Function Address.

EXAMPLE

FirstPort Scotland	Information	Information	Information
Information (Information) (Information) (Information)	Information (Information) (Information) (Information)	Information	Information
Information (Information) (Information) (Information)	Information (Information) (Information) (Information)	Information	Information

CONTENTS

GENERAL SPEC.

ENGINE

Cylinder	B2 - B3
Crankshaft, Pinion	B4
Water Pump	B5
Radiator, Hose	B6
Oil Pump 1	B7
Oil Pump 2	B8
Intake	B9 - B10
Camshaft	B11 - B12
Exhaust	B13 - B14
Crankcase	B15
Crankcase Cover 1	C2
Starter	C3
Clutch	C4
Transmission	C5 - C6
Shift Cam, Fork	C7
Shift Shaft	C8

CHASSIS

Frame	C9
Fender	C10
Side Cover	C11
Oil Tank	C12
Rear Arm	C13 - C14
Rear Suspension	C15
Steering	D2
Front Fork	D3 - D4
Fuel Tank	D5 - D6
Seat	D7
Front Wheel	D8

Front Brake Caliper	D9
Rear Wheel	D10 - D11
Rear Brake Caliper	D12
Steering Handle, Cable	D13
Front Master Cylinder	D14
Stand, Footrest	D15
Rear Master Cylinder	D2 - D3
Crawling 1	E6 - E5
Generator	E6
Flasher Light	E7
Water	E8 - E9
Headlight	E10
Taillight	E11
Handle Switch, Lever	E12
Electrical 1	E13
Electrical 2	E14

INDEX (GENERAL SPEC.)

Numerical Index	L2 - L5
-----------------------	---------

INDIVIDUAL SPEC.

FOR BELGIUM

Alternate (Chassis)	F2
---------------------------	----

FOR ENGLAND

Alternate (Chassis)	F4
Alternate (Electrical)	F5

FOR ITALY

Alternate (Chassis)	F7
---------------------------	----

FOR SWEDEN

Alternate	F9
-----------------	----

FOR NORWAY

Alternate (Chassis)	F11
---------------------------	-----

INDEX (INDIVIDUAL SPEC.)

Numerical Index	M2
-----------------------	----

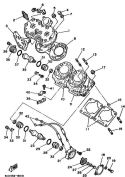


FIG. 1 EXPLODED

NO. FIG.	PART NO.	DESCRIPTION	QTY	REMARKS
1	0001-0101-00	HAUS, cylinder 1	1	
2	0001-0100-00	HAUS, upper (000 0000)	1	
3	0201-0100-00	COVER 1	1	
4	0001-0000-00	BEARING	2	
5	0001-0000-00	BEARING	2	
6	0000-0100-00	SHAFT	1	
7	0000-0000-00	WASHER, plate	1	
8	0001-0100-00	WASHER, cylinder head 1	1	
9	0101-0100-00	VALVE, inlet 1	1	
10	0101-0100-00	VALVE, inlet 2	1	
11	0001-0100-00	WASHER, cylinder head	2	
12	0001-0000-00	BEARING, shaft	2	
13	0001-0000-00	BEARING, shaft	2	
14	0001-0000-00	BEARING, shaft	2	
15	0001-0000-00	BEARING, shaft	2	
16	0001-0100-00	VALVE, shaft	2	
17	0001-0000-00	BEARING	2	
18	0001-0100-00	VALVE, shaft	2	
19	0001-0100-00	VALVE, shaft	2	
20	0001-0000-00	WASHER, plate	2	
21	0101-0100-00	VALVE	1	
22	0001-0000-00	BEARING	2	
23	0001-0100-00	VALVE 1	1	
24	0101-0100-00	VALVE 1	1	
25	0001-0000-00	BEARING	1	
26	0001-0000-00	WASHER, spring	1	
27	0001-0000-00	WASHER, plate	1	
28	0001-0100-00	VALVE 2	1	

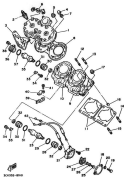


FIG. 1 (Continued)

REF. NO.	PART NO.	DESCRIPTION	QTY	REMARKS
28	82000-0700	O-RING	1	
29	875-0107-00	WASHER 2	2	
30	82000-0700	O-RING	2	
31	80000-0000	FLY SEAL	1	
32	875-0107-00	WASHER 1	2	
33	81000-0000	SHAFT	1	
34	100-01000-00	SHAFT 2	1	
35	000-01000-00	SHAFT 1	1	
36	000-01000-00	SHAFT 1	1	
37	000-01000-00	SHAFT 1	1	
38	000-01000-00	SHAFT 1	1	
39	000-01000-00	SHAFT 1	1	
40	000-01000-00	SHAFT 1	1	
41	000-01000-00	SHAFT 1	1	
42	000-01000-00	SHAFT 1	1	
43	000-01000-00	SHAFT 1	1	
44	000-01000-00	SHAFT 1	1	
45	000-01000-00	SHAFT 1	1	
46	000-01000-00	SHAFT 1	1	
47	000-01000-00	SHAFT 1	1	
48	000-01000-00	SHAFT 1	1	
49	000-01000-00	SHAFT 1	1	
50	000-01000-00	SHAFT 1	1	
51	000-01000-00	SHAFT 1	1	
52	000-01000-00	SHAFT 1	1	
53	000-01000-00	SHAFT 1	1	
54	000-01000-00	SHAFT 1	1	
55	000-01000-00	SHAFT 1	1	
56	000-01000-00	SHAFT 1	1	
57	000-01000-00	SHAFT 1	1	
58	000-01000-00	SHAFT 1	1	
59	000-01000-00	SHAFT 1	1	
60	000-01000-00	SHAFT 1	1	
61	000-01000-00	SHAFT 1	1	
62	000-01000-00	SHAFT 1	1	
63	000-01000-00	SHAFT 1	1	
64	000-01000-00	SHAFT 1	1	
65	000-01000-00	SHAFT 1	1	
66	000-01000-00	SHAFT 1	1	
67	000-01000-00	SHAFT 1	1	
68	000-01000-00	SHAFT 1	1	
69	000-01000-00	SHAFT 1	1	
70	000-01000-00	SHAFT 1	1	
71	000-01000-00	SHAFT 1	1	
72	000-01000-00	SHAFT 1	1	
73	000-01000-00	SHAFT 1	1	
74	000-01000-00	SHAFT 1	1	
75	000-01000-00	SHAFT 1	1	
76	000-01000-00	SHAFT 1	1	
77	000-01000-00	SHAFT 1	1	
78	000-01000-00	SHAFT 1	1	
79	000-01000-00	SHAFT 1	1	
80	000-01000-00	SHAFT 1	1	
81	000-01000-00	SHAFT 1	1	
82	000-01000-00	SHAFT 1	1	
83	000-01000-00	SHAFT 1	1	
84	000-01000-00	SHAFT 1	1	
85	000-01000-00	SHAFT 1	1	
86	000-01000-00	SHAFT 1	1	
87	000-01000-00	SHAFT 1	1	
88	000-01000-00	SHAFT 1	1	
89	000-01000-00	SHAFT 1	1	
90	000-01000-00	SHAFT 1	1	
91	000-01000-00	SHAFT 1	1	
92	000-01000-00	SHAFT 1	1	
93	000-01000-00	SHAFT 1	1	
94	000-01000-00	SHAFT 1	1	
95	000-01000-00	SHAFT 1	1	
96	000-01000-00	SHAFT 1	1	
97	000-01000-00	SHAFT 1	1	
98	000-01000-00	SHAFT 1	1	
99	000-01000-00	SHAFT 1	1	
100	000-01000-00	SHAFT 1	1	

300000-0000

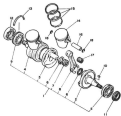


FIG. 3 DISASSEMBLY, PISTON

REF. NO.	PART NO.	DESCRIPTION	QTY	REMARKS
1	20-1180-00	DISASSEMBLY KIT	1	
2	50-1181-00	CRANK 1	1	
3	50-1182-00	CRANK 2& 3& 4	1	
4	50-1183-00	CRANK 5	1	
5	5000-0007	CRANK	1	
6	5000-0007	CRANK	4	
7	5010-5000	CRANK, cylindrical	2	
8	50-1184-00	CRK, connecting	2	
9	5000-0007	CRANK	1	
10	5000-0007	CRK, connecting	1	
11	5000-0100	CRK 1&2	1	
12	5000-0100	CRK 1&2	1	
13	5000-0100	CRK 1&2	1	
14	20-1180-00	DISASSEMBLY KIT	2	
15	20-1180-00	DISASSEMBLY KIT	1	1
16	20-1180-00	DISASSEMBLY KIT	1	1
17	20-1180-00	DISASSEMBLY KIT	1	1
18	20-1180-00	DISASSEMBLY KIT	1	1

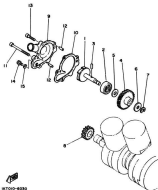


FIG. 2 WATER PUMP

REF. NO.	PART NO.	DESCRIPTION	QTY	REMARKS
1	917-12490-00	IMPELLER BOLT 1/200	1	
2	90904-90447	WEL SEAL	1	
3	90904-12008	PLATE, cover	1	
4	905-12899-00	GEAR, impeller shaft	1	
5	90904-00459	WHEEL, plate	1	
6	90904-00459	WHEEL, plate	1	
7	90904-00459	WHEEL, plate	1	
8	907-12908-00	GEAR, driver	1	
9	219-12920-00	COVER, housing	1	
10	907-12908-00	GEAR, housing cover 2	1	
11	91211-00095	BOLT	2	
12	90904-10011	PLATE, cover	2	
13	91211-00095	BOLT	2	
14	90405-00163	BOLT, water pump	1	
15	90904-00067	WHEEL, plate	1	

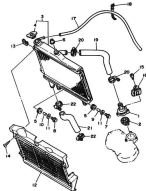


FIG. 4 RADIATOR HOSE

REF. NO.	PART NO.	DESCRIPTION	Q'TY	REMARKS
1	270-12440-00	RADT	1	
2	270-12470-00	BRACKET	1	
3	270-12460-00	RADIATOR HOSE	1	
4	120-12460-00	CAP, radiator	1	
5	90400-10001	SCREW	2	
6	90400-10004	SCREW	1	
7	90401-00025	BOLT, flange	1	
8	90401-00025	BOLT, flange	1	
9	90207-07360	WASHER	1	
10	90207-07360	WASHER	1	
11	90207-06040	WASHER, plate	2	
12	270-12440-00	CORNER, radiator	1	
13	90103-00040	WHL, spring	4	
14	90103-00040	SCREW, tapping	4	
15	90103-00040	BOLT	1	
16	90400-10070	CLAMP	1	
17	90400-10070	HOSE	1	
18	431-02030-11	WHEEL, switch cover	1	
19	270-12460-00	FAN 2	1	
20	90400-10070	HOSE CLAMP HOSE	2	
21	270-12460-00	FAN 1	1	
22	90400-10070	HOSE CLAMP HOSE	2	



870000-8040

B6

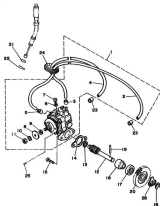
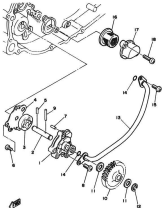


FIG. 5. 03, PUMP 1

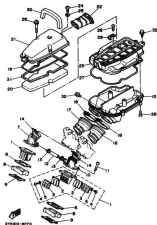
REF. NO.	PART NO.	DESCRIPTION	QTY	REMARKS
1	901-12101-03	OIL PUMP HOSE	1	
2	90401-05403	HOSE	1	
3	90400-00003	CLIP	1	
4	90401-00004	HOSE	1	
5	90400-00003	CLIP	1	
6	90400-04004	HOSEKIT	1	
7	90900-04006	SCREW, 5-44	1	
8	107-11100-01	PLATE, mounting	1	
9	107-11100-00-00	COVER (1.02)	1	
10	92900-00100	WASHER, spring	1	
11	90300-00400	JOINT	1	
12	901-12100-00	SHAFT, axle	1	
13	90001-00004	WASHER, plate	1	
14	900-12100-01	SHAFT, pump drive	1	
15	9001-00010	SCREW, pan head	2	
16	107-11100-00	WASHER, axle shaft holder	1	
17	90001-00002	WASHER	1	
18	90000-00006	CLIP, 1.0	1	
19	90000-00001	PLATE, cover	1	
20	900-12100-00	SCREW, pump drive	1	
21	90000-00000	WASHER	1	
22	90000-00004	CLIP	1	
23	90000-00000	CLIP	1	
24	107-12100-00	WASHER, oil plate	1	
25	900-12100-01	CLIP	1	
26	90000-00003	WASHER, lock	1	



6X7160-62-60

FIG. 6 661, PART 2

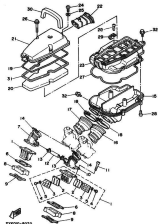
REF. NO.	PART NO.	DESCRIPTION	QTY	REMARKS
1	907-1-0008-00	HOUSING, cover	1	
2	907-1-0004-00	SHAFT, pump	1	
3	908-1-0008-00	SCREW, 6057 1	1	
4	907-1-0008-00	COVER, pump	1	
5	90813-10000	PIA, cover1	1	
6	90813-00010	SCREW, pan head	1	
7	90804-10011	PIA, cover1	2	
8	90803-00009	SCREW, pan head	3	
9	90803-00009	PIA, cover1	1	
10	907-1-1001-00	SEAL, pump drive	1	
11	90804-10011	PIA, cover1	3	
12	90808-00000	COVER, 1P	1	
13	907-1-1001-00	PIA, seal drive 1	1	
14	90716-00140	6-6160	2	
15	90803-00010	SCREW, pan head	1	
16	907-1-0001-00	SEAL, seal 1	1	
17	907-1-0001-00	COVER, seal drive	1	
18	90803-00010	SCREW, pan head	2	



270000-00700

FIG. 2 EXPLOD

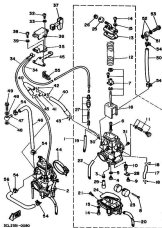
REF. NO.	PART NO.	DESCRIPTION	QTY	REMARKS
1	107-13610-00	REED, reed plate	2	
2	107-13610-00	REED, valve	2	
3	107-13610-00	STOPPER, reed valve	2	
4	90901-02000	SCREW, pan head	8	
5	90900-00100	WASHER, spring	4	
6	107-13620-00	CAJONET, valve seat	2	
7	107-13605-00	JOINT, carburetor	1	
8	270-16610-00	SEAL, intake valve 1	2	
9	107-16610-00	CAJONET, needle valve 1	2	
10	107-16610-00	CAJONET, needle valve 2	2	
11	10701-04000	SEAL	6	
12	107-14400-00	PISTON	1	
13	90940-00000	CLIP	2	
14	90950-44000	REED, (1.6mm) reed	2	
15	270-16610-00	CAJONET, air cleaner 1	1	
16	270-16610-00	CAJONET, air cleaner 1	1	
17	270-16610-00	CAJONET, air cleaner 2	1	
18	90940-04000	CLIP, hose	2	
19	107-16610-00	CAJONET, air cleaner	1	
20	270-16610-00	CAJONET, air cleaner	1	
21	270-16610-00	CAJONET, air cleaner seat 1	1	
22	107-16610-00	CAJONET	1	
23	270-16610-00	CAJONET, air cleaner 2	1	
24	90901-02000	SCREW, pan head	1	
25	90901-02000	WASHER, plain	1	
26	10701-04000	SEAL, with washer	2	
27	106-14410-00	SEAL	1	
28	90900-00100	WASHER, tapping	6	



BY6000-6070

FIG. 7 IMAGE

REF. NO.	PART NO.	DESCRIPTION	Q'TY	REMARKS
19	10002-10001	GASKET	2	
20	270-10001-00	SCAL	1	
21	270-10001-00	PLATE, stamped	1	
22	60170-60000	SOIL, with water	1	



3041500-00000

FIG. 8 CARBURETOR

REF. NO.	PART NO.	DESCRIPTION	QTY	REMARKS
1	04X-14101-00	CARBURETOR BODY 1	1	
2	04X-14102-00	CARBURETOR BODY 2	1	
3	100-14142-00	JET, jet for 14000	1	
4	100-14143-02-00	JET, main 14200	1	
5	100-14150-00	WASHER, main jet	1	
6	100-14141-00	NEEDLE, main	1	
7	100-14004-00	NEEDLE SET	1	
8	100-14006-00	PISTON, piston	1	
9	10000-04000	SCREW, pin head	1	
10	100-14107-00	NEEDLE 14000 SET	1	
11	100-14103-00	14000/10 SCREW SET	1	
12	100-14121-00	SPRING, throttle valve	1	
13	100-14108-00	WASHER	1	
14	10000-04014	SCREW, pin head	10	
15	10000-04100	WASHER, spring	10	
16	200-14117-01	PLATE, throttle 1	1	
17	100-14008-00	PISTON	1	
18	100-14109-00	CLIP, pin	2	
19	100-14007-00	PISTON	1	
20	100-14006-00	PISTON	1	
21	100-14101-00	WASHER, screw	1	
22	100-14107-00	PISTON	1	
23	100-14108-00	PISTON	1	
24	100-14143-00	JET 14200	1	
25	100-14142-00	JET	1	
26	100-14141-00	NEEDLE, needle adjusting	1	
27	100-14004-00	NEEDLE SET	1	
28	200-14144-00	PLATE	1	

B11

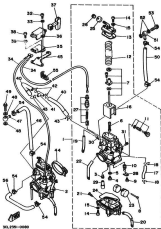
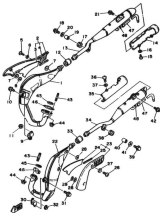


FIG. 8 CONTINUED

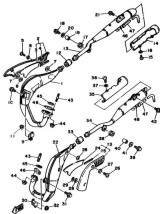
REF. NO.	PART NO.	DESCRIPTION	QTY	REMARKS
19	101-10100-00	PIPE	1	
20	101-10000-00	WET, PISTON	1	
21	100-14150-00	PIPE, SET, AIR 11, 12	1	
22	9000-04010	SCREW, pan head	2	
23	9000-04000	WASHER, spring	2	
24	107-05001-00	CLAMP, vibrator 1	2	
25	200-11000-00	CLAMP, vibrator	1	
26	470-10000-00	EXP. starter	1	
27	470-10000-00	CABLE 1200 COMP.	1	
28	9000-04010	SCREW, pan head	2	
29	9000-04000	WASHER, spring	2	
30	101-10100-00	PIPE	2	
31	90410-07000	WET 3	1	
32	90407-10000	CLIP	2	
33	90407-11000	CLIP	2	
34	101-10100-00	PIPE	2	
35	270-14150-00	PIPE, vibrator lower	1	
36	270-14000-00	PIPE 6	1	
37	9000-04007	WASHER	2	
38	9000-04000	WASHER	2	
39	9000-04010	SCREW, pan head	2	
40	270-14000-00	PIPE 6	1	
41	9000-04007	WASHER	1	
42	90410-07000	WET 3	2	
43	9000-04010	SCREW, pan head	1	
44	9000-04000	WASHER, spring	1	
45	270-14000-00	PIPE 6	1	



800100-80060

FIG. 8 EXHAUST

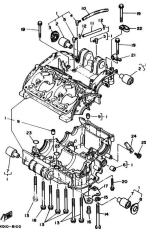
REF. NO.	PART NO.	DESCRIPTION	Q'TY	REMARKS
1	290-14410-00	EXHAUST PIPE ASSY 1	1	
2	290-04410-00	PROTECTOR, muffler 1	1	
3	290-14710-00	JAMPER, muffler	1	
4	290-14710-00	JAMPER, muffler	1	
5	80000-00010	SCREW, blind	2	
6	80050-00010	WASHER, plate	2	
7	520-14750-00	WASHER, protector	2	
8	80050-00010	WASHER, plate	1	
9	500-14070-00	SLIT, muffler 1	1	
10	80010-00010	BOLT, flange	1	
11	80050-00010	NUT, flange	1	
12	290-14710-00	GASSET, muffler	1	
13	290-14710-00	EXHAUST 1	1	
14	290-14750-00	PROTECTOR, subpiper	1	
15	80000-00000	SCREW, blind	4	
16	80050-00010	WASHER, plate	1	
17	80040-14711	GASSET	1	
18	80020-00010	BOLT, flange	1	
19	80007-07011	COLLAR	1	
20	80050-00010	WASHER, plate	1	
21	80050-00010	BOLT	1	
22	290-14410-00	EXHAUST PIPE ASSY 2	1	
23	290-04410-00	PROTECTOR, muffler 2	1	
24	290-14710-00	JAMPER, muffler 2	1	
25	290-14710-00	JAMPER, muffler	1	
26	80000-00010	SCREW, blind	2	
27	80050-00010	WASHER, plate	2	
28	520-14750-00	WASHER, protector	2	



SCHEMATIC-00000

FIG. 9 (CONT.)

REF. NO.	PART NO.	DESCRIPTION	QTY	REMARKS
26	90001-00073	WASHER, plate	1	
30	160-18771-00	SPR., buffer-1	1	
31	90074-00016	BOLT, flange	1	
32	90706-00000	NUT, flange	1	
33	210-140714-00	SHOCK, buffer	1	
34	210-140702-04	CONNECT, 2	1	
35	210-140750-04	PROTECTOR, of buffer	1	
36	90000-00000	SCREW, blind	3	
37	90002-00010	WASHER, plate	3	
38	90400-10011	SCREW	1	
39	90006-00000	BOLT, flange	1	
40	90003-00500	COILAR	1	
41	90001-00000	WASHER, plate	1	
42	90004-00002	BOLT	1	
43	10714-00000	BOLT, stud	3	
44	90003-00007	NUT, self-locking	3	
45	210-140713-00	SHOCK, exhaust pipe	2	
46	210-140413-00	SHOCK 2	2	
47	210-140704-01	PIPE, 10	2	
48	90007-11000	CLIP	2	



2740002-8100

FIG. 10 CONTINUED

REF. NO.	PART NO.	DESCRIPTION	QTY	REMARKS
1	265-11100-00	CLAMPING HOSE	1	
2	107-11110-00	,SUPPORT, engine mount 1	2	
3	275-11120-00	,SUPPORT, damper	1	
4	580-11111-00	,BRACKET	1	
5	275-11112-02	,NUTS	2	
6	80000-11012	,BUSH, flange	1	
7	107-11120-00	,SUPPORT, engine mount 2	2	
8	275-11120-00	,SUPPORT, damper	1	
9	80000-11014	,PIN, shaft	2	
10	80000-01112	WHEEL	1	
11	80000-01400	WHEEL	1	
12	80000-01019	ELIP	1	
13	80000-01000	SOLE, 11 page	1	
14	80000-01000	SOLE	1	
15	80000-01000	SOLE, plate	1	
16	80000-01010	SOLE	1	
17	275-01000-00	SOLE, engine 1	1	
18	80000-01010	SOLE, flange	1	
19	80000-01010	SOLE, flange	1	
20	80000-01010	SOLE, flange	1	
21	80000-01010	SOLE	1	
22	80000-01010	SOLE	1	
23	80000-01010	SOLE	1	
24	80000-01010	SOLE	1	
25	80000-01010	SOLE	1	

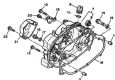


FIG. 10. CRANKCASE COVER 1

REF. NO.	PART NO.	DESCRIPTION	QTY	REMARKS
1	240-10401-00	Crank, generator	1	
2	240-10401-00	CRANK 1	1	
3	8101-10400	SOI	4	
4	240-10401-00	Crank, chain case	1	
5	8101-10400	SOI	1	
6	8101-10400	SOI	1	
7	214-41001-00	CRANKCASE COVER PART 2	1	
8	214-41001-00	CRANK, head	1	
9	214-41001-00	CRANK, oil	1	
10	80001-10400	CRANK	1	
11	80001-10400	CRANK, head	1	
12	80001-10400	SOI	6	
13	80001-10400	SOI	1	
14	80001-10400	SOI, 15mm	1	
15	80001-10400	CRANK	1	
16	80001-10400	SOI, roller head	1	
17	80001-10400	CRANK, plate	1	
18	214-41001-00	CRANK, CRANKCASE COVER 2	1	
19	214-41001-00	CRANK, chain case	1	
20	80001-10400	SOI, torque roller head	1	
21	214-41001-00	CRANK, oil part	1	
22	80001-10400	SOI	1	



FIG. 12. 1240000

REF. NO.	REF. NO.	DESCRIPTION	QTY	REMARKS
1	107-1040-00	COX SHAFT ADP	1	
2	107-1041-00	SCAL. SHA (200)	1	
3	1040-1041	SLIP	1	
4	1040-1070	WATER, SCREW	1	
5	1040-1070	WATER, PIN	1	
6	107-1042-00	WATER	1	
7	1070-1070	SH. SHA	1	
8	107-1043-00	SCAL. SHA (100 100)	1	
9	1040-1070	WATER, PIN (1.00)	2	
10	1040-1040	COX, SLIP	2	
11	107-1040-01	SCREW	1	
12	107-1040-01	COX SHAFT ADP	1	
13	1040-1040	SLIP	1	

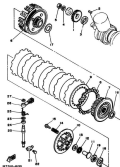
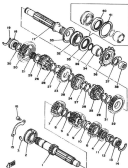


FIG. 10. 25000

REF. NO.	PART NO.	DESCRIPTION	QTY	REMARKS
1	5000-10011-00	SCREW, pinion drive (22T)	1	
2	5000-10004	KEY, camshaft	1	
3	5000-10004	PISTON	1	
4	5000-10010	WASHER, control spring	1	
5	5000-10000	VAL	1	
6	500-10000-00	CRANK SHAFT ASSY (22T)	1	
7	500-10001-00	BEARING, crank	1	
8	500-10001-00	PISTON, crankpin	1	
9	500-10001-00	PISTON, crank 1	1	
10	500-10001-00	PISTON, crankpin 1	1	
11	500-10001-01	VAL, push 1	1	
12	5000-10000	SCREW	1	
13	5000-10000	SCREW, valve	1	
14	5000-10000	SCREW, compression	1	
15	5000-10001	SCREW, valve holder	1	
16	500-10000-00	VALVE, crank 1	1	
17	500-10000-00	VALVE, crank 1	1	
18	5000-10001	WASHER, fuel	1	
19	5000-10000	VAL	1	
20	500-10000-00	VALVE, push lever	1	
21	500-10000-00	VALVE, lever hole	1	
22	5000-10000	VAL	1	
23	5000-10000	SCREW, valve	1	
24	5000-10000	VAL, valve	1	
25	5000-10000	SCREW, control	1	
26	500-10000-01	PISTON CRANK KEY	1	
27	5000-10000	SCREW	1	





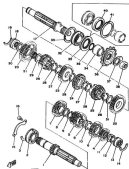
NOTES

1. The 1st, 2nd, 3rd, 4th, 5th and 6th gears are made of cast iron and are hardened. The 7th gear is made of steel and is hardened. The 8th gear is made of steel and is hardened. The 9th gear is made of steel and is hardened. The 10th gear is made of steel and is hardened. The 11th gear is made of steel and is hardened. The 12th gear is made of steel and is hardened. The 13th gear is made of steel and is hardened. The 14th gear is made of steel and is hardened. The 15th gear is made of steel and is hardened. The 16th gear is made of steel and is hardened. The 17th gear is made of steel and is hardened. The 18th gear is made of steel and is hardened. The 19th gear is made of steel and is hardened. The 20th gear is made of steel and is hardened. The 21st gear is made of steel and is hardened. The 22nd gear is made of steel and is hardened. The 23rd gear is made of steel and is hardened. The 24th gear is made of steel and is hardened. The 25th gear is made of steel and is hardened. The 26th gear is made of steel and is hardened. The 27th gear is made of steel and is hardened. The 28th gear is made of steel and is hardened. The 29th gear is made of steel and is hardened. The 30th gear is made of steel and is hardened. The 31st gear is made of steel and is hardened. The 32nd gear is made of steel and is hardened.

FIG. 14 TRANSMISSION

NO.	REF. NO.	DESCRIPTION	QTY.	REMARKS
1	20-1707-00	SHAFT, MAIN (1ST)	1	
2	20-1708-00	BEARING (INTERMEDIATE)	1	
3	20-1709-00	CRANK	1	
4	20-1710-00	GEAR, 3RD DRIVE (1ST)	1	
5	20-1711-00	GEAR, 3RD DRIVE	1	
6	20-1712-00	GEAR, 3RD DRIVE (2ND)	1	
7	20-1713-00	GEAR, 3RD DRIVE (3RD)	1	
8	20-1714-00	GEAR, 3RD DRIVE	1	
9	20-1715-00	CRANK	1	
10	20-1716-00	CRANK	1	
11	20-1717-00	GEAR, 3RD DRIVE (1ST)	1	
12	20-1718-00	CRANK	1	
13	20-1719-00	GEAR, 3RD DRIVE (1ST)	1	
14	20-1720-00	CRANK	1	
15	20-1721-00	GEAR, 3RD DRIVE (1ST)	1	
16	20-1722-00	CRANK	1	
17	20-1723-00	GEAR, 3RD DRIVE (1ST)	1	
18	20-1724-00	CRANK	1	
19	20-1725-00	GEAR, 3RD DRIVE (1ST)	1	
20	20-1726-00	CRANK	1	
21	20-1727-00	GEAR, 3RD DRIVE (1ST)	1	
22	20-1728-00	CRANK	1	
23	20-1729-00	GEAR, 3RD DRIVE (1ST)	1	
24	20-1730-00	CRANK	1	
25	20-1731-00	GEAR, 3RD DRIVE (1ST)	1	
26	20-1732-00	CRANK	1	
27	20-1733-00	GEAR, 3RD DRIVE (1ST)	1	
28	20-1734-00	CRANK	1	
29	20-1735-00	GEAR, 3RD DRIVE (1ST)	1	
30	20-1736-00	CRANK	1	
31	20-1737-00	GEAR, 3RD DRIVE (1ST)	1	
32	20-1738-00	CRANK	1	

C3



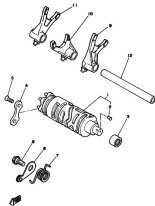
107070-0000

NOTE:

The first three digits point out the first 30 thousand are shown together for ease of identification and the last two digits are shown only for the first three thousand.

FIG. 18 TRANSMISSION

NO.	PART NO.	DESCRIPTION	QTY	REMARKS
47	107070-0100	WASHER	2	
48	107070-0200	COIL SPR	4	
49	107070-0300	WASHER, PLATE (1.5X1.5)	2	
50	107070-0400	WASHER, PLATE (1.5X1.5)	2	
51	107070-0500	WASHER, PLATE	1	
52	107070-0600	SLIDING (SLIDING/SHOCK)	1	
53	107070-0700	COIL SPR	1	
54	107070-0800	COIL SPR	1	
55	107070-0900	CL. SPR	1	
56	107070-1000	WASHER, PLATE (1.5X1.5X1.5X1.5)	1	
57	107070-1100	WASHER, PLATE	1	
58	107070-1200	WASHER	1	
59	107070-1300	COIL SPR	1	
60	107070-1400	CL. SPR	1	1.5X1.5
61	107070-1500	COIL SPR	1	1.5X1.5



INT 250-0100

FIG. 15 SHIFT CABLE FROM

REF. NO.	PART NO.	DESCRIPTION	QTY	REMARKS
1	107-10040-00	SHIFT CABLE ASST	1	
2	108-10040-00	LEVER, neutral	1	
3	90217-01706	BEARING, cylindrical	1	
4	101-10040-00	PLATE, stopper	1	
5	90701-00010	SCREW, flat head	2	
6	400-10100-00	STOPPER LEVER ASST	1	
7	90004-04714	SPRING, torsion	1	
8	90104-04077	BOLT	1	
9	107-10011-00	FORK, pin 1	1	
10	107-10012-00	FORK, pin 2	1	
11	107-10013-00	FORK, pin 3	1	
12	107-10001-00	END, cable from pinion 1	1	

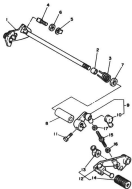
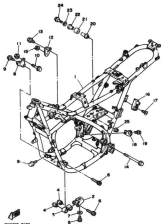


FIG. 16. SHIFT SHAFT

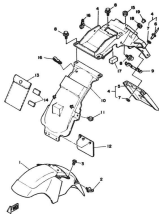
REF. NO.	PART NO.	DESCRIPTION	QTY	REMARKS
1	9011-12101-00	SHIFT SHAFT ASSEMBLY	1	
2	90980-12101	SPACER	1	
3	90908-12101	SPRING, Compression	1	
4	90149-08004	WASHER	1	
5	90111-08114	WASHER, Lock	1	
6	90110-08001	BALL	1	
7	90100-11004	BALL SEAL, 100/10-00-0 400	1	
8	90087-11000	COLLAR	1	
9	210-10120-00	SHIFT SHAFT ASSEMBLY	1	
10	200-10104-00	COVER, Shift	1	
11	90100-08001	BOLT	1	
12	210-10110-00	SHIFT PEDAL ASSEMBLY	1	
13	200-10100-00	COVER, Shift	1	
14	200-10110-00	COVER, SHIFT pedal	1	
15	140-10110-00	ROD, Shift	1	
16	90100-08100	BOLT	1	
17	90110-08100	BOLT	1	



21X0000-0010

FIG. 17 FRAME

REF. NO.	PART NO.	DESCRIPTION	Q'TY	REMARKS
1	004-21110-00-07	FRAME, LAMP.	1	REARLIGHT GRAB
2	204-21010-00	SHK, engine 1	1	
3	204-21014-00	SHK, engine 1	1	
4	410-21000-00	CAMPER, rubber 1	2	
5	01210-10010	BS, I	1	
6	01210-10000	BS, I	2	
7	00001-10007	WASHER, plate	1	
8	204-21010-00	SHK, engine 2	1	
9	00011-00010	BS, I, flange	2	
10	00100-10007	BS, I, washer board	1	
11	00120-10004	NUT	1	
12	204-21010-00	SHK, engine 2	1	
13	00011-00010	BS, I, flange	2	
14	00100-10110	BS, I, washer board	1	
15	00120-10004	NUT	1	
16	204-21200-00	HOLDET HANGER ASSE	1	
17	00114-00000	SCREW, counter-sunk	1	
18	204-21000-00	2 SHK, stop rubber	1	
19	00004-00000	BS, I, flange	1	
20	001-21000-00	SHK	1	
21	004-21110-00	SHK	1	
22	104-21100-00	SHK	1	
23	00001-00010	WASHER, plate	1	
24	00004-00000	BS, I, flange	1	
25	00000-00000	NUT, self-locking	1	



160000-0000

FIG. 16 FENDER

REF. NO.	PART NO.	DESCRIPTION	Q-TY	REMARKS
1	303-11010-00	FRONT FENDER COMP.	1	OR FORWARD BLACK
	303-11010-10	FRONT FENDER COMP.	1	OR FORWARD BLUE
2	180-11010-00	HOLDER, cable	1	
3	50100-00011	BOLT, washer band	4	
4	303-02141-00	REAR FENDER COMP.	1	
5	303-11421-00	FLAP	1	
6	90017-00019	SCREW, blind	4	
7	90019-04442	ANCHOR, plate	2	
8	90111-00010	BOLT, with washer	4	
9	219-11000-01	Bracket, rear step	1	
10	219-11420-00	COVER, mud	1	
11	90111-00111	BOLT, with washer	2	
12	348-11001-00	FLAP	1	
13	403-00000-00	POCKET	1	
14	403-00040-00	WRENCH	2	
15	90000-00000	SCREW	1	
16	90004-12017	CLAMP	2	
17	219-11441-00	SCREW	2	
18	90000-11001	SCREW	2	
19	90007-00000	SCREW	1	

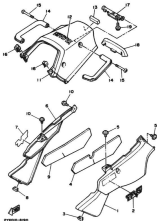
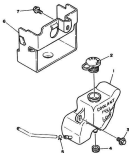


FIG. 10 REAR SUBFRAME

REF. NO.	PART NO.	DESCRIPTION	Q'TY	REMARKS
1	80A-21710-00	COVER, side 1	1	OR TURNING BLACK
	80A-21710-10-00	COVER, side 1	1	OR BLACK/BLACK
2	27A-21700-00	SHOCK 1	1	OR FOR 16
	27A-21700-10	SHOCK 1	1	OR FOR 250
3	90A00-10000	SHOCKET	1	
4	27A-21700-00	LINKAGE 1	1	
5	90700-00001	SCREW, with washer	2	
6	80A-21700-00	COVER, side 2	1	OR TURNING BLACK
	80A-21700-10-00	COVER, side 2	1	OR BLACK/BLACK
7	27A-21700-00	SHOCK 1	1	OR FOR 16
	27A-21700-10	SHOCK 1	1	OR FOR 250
8	90A00-10000	SHOCKET	1	
9	27A-21700-00	LINKAGE 2	1	
10	90700-00001	SCREW, with washer	2	
11	80A-20750-00	COVER, left	1	OR TURNING BLACK
	80A-20750-10	COVER, left	1	OR TURNING BLUE
12	90A00-00001	SHOCK, yamaha	1	OR FOR 16
	90A00-00001	SHOCK, yamaha	1	OR FOR 250
13	27A-21700-00	SHOCK 1	1	
14	27A-21700-00	SHOCK 1	1	
15	90A00-00001	SCREW	4	
16	90A00-00001	WEL, spring	2	
17	27A-21700-00	SHOCKET 1	1	
18	27A-21700-00	SHOCKET, mounting 2	1	
19	91000-00001	BOLT, flange	2	

FIG. 25 BIL. 1999

REF. NO.	PART NO.	DESCRIPTION	QTY	REMARKS
1	216-21671-00	TRAIL, recovery	1	
2	810-21676-01	CAP	1	
3	90119-00100	BO.F., with washer	1	
4	90400-13701	COVER	1	
5	90407-00001	CLIP	2	
6	210-21170-00	BOX, battery	1	
7	90119-00111	BO.F., with washer	2	



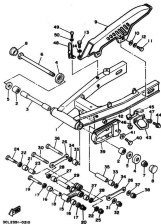
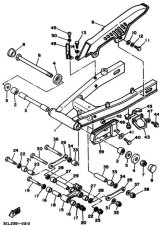


FIG. 21. REAR ARM

REV. NO.	PART NO.	DESCRIPTION	QTY	REMARKS
1	05X-01110-00	REAR ARM COMP.	1	
2	90000-03400	BUSHING	2	
3	911-01104-00	BUSH	1	
4	907-01121-00	CONTROL ARM 2	2	
5	90000-16110	WASHER, plate	2	
6	900-00181-00	SHFT., plate	1	
7	90000-16127	WTL, self-lubric	1	
8	100-01084-00	COILVER	2	
9	01X-00100-00	CHAR. CASE ASST	1	
10	90000-06000	WASHER	2	
11	90000-06010	BSL 1	2	
12	90000-06000	WASHER	2	
13	90011-06000	BSL 1	1	
14	90011-06000	WASHER, wave	1	
15	01X-02170-00	ARM, not lap	1	
16	90000-00170	BUSH	2	
17	90004-00000	SL, SEAL	2	
18	90001-00000	COLLAR	1	
19	90004-00004	BSL 1	1	
20	90000-00000	WTL, self-lubric	1	
21	90000-00111	BUSH, self-lub	1	
22	90004-00000	SL, SEAL	2	
23	90001-00000	COLLAR	1	
24	90004-00004	BSL 1	1	
25	90000-00000	WTL, self-lubric	1	
26	01X-01100-00	ARM 1	2	
27	90000-16110	WASHER	2	
28	90000-06000	SL, SEAL	2	



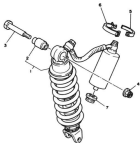
3CL3789-00-0

FIG. 21 MAIN ASM

REF. NO.	PART NO.	DESCRIPTION	Q'TY	REMARKS
29	90207-11626	COLLAR	1	
30	90101-11645	BOLT	1	
31	90201-11647	WASHER, plate	1	
32	90105-11119	WLT, self-locking	1	
33	90105-11111	WHEEL	2	
34	91105-15000	CS, ROLL	2	
35	90207-11168	COLLAR	1	
36	90101-11645	BOLT	1	
37	90201-11647	WASHER, plate	1	
38	90105-11119	WLT, self-locking	1	
39	210-02151-00	SHA, guard	1	
40	90201-06026	BOLT	1	
41	90201-06026	WASHER, plate	1	
42	90207-07573	COLLAR	1	
43	210-02104-00	SHIELD, chain	1	
44	90207-06020	BOLT, Flange	2	
45	210-02104-00	BRACKET, chain guard	1	
46	90207-06016	BOLT, Flange	2	
47	90207-06717	COLLAR	2	
48	210-04819-01	ROLLER, blade base 1	1	
49	90207-06000	SCREW, pan-head	1	
50	90200-06100	WASHER, spring	1	

FIG. 33 REAR SUSPENSION

REF. NO.	PART NO.	DESCRIPTION	QTY	REMARKS
1	90-22210-01	SWAY BAR/SHOCK ARM, rear	1	
2	216-22210-00	SHOCK, rear shock absorber	1	
3	90109-108A2	BOLT	1	
4	90611-10050	WET, self-lubricating	1	
5	144-22250-00	CARRIER, rear frame	1	
6	144-25250-00	WASHER, rear frame	1	
7	90480-173A8	WASHER	1	



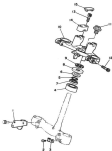
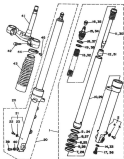


FIG. 01 000000

NO. FIG.	NO. NO.	DESCRIPTION	QTY	REMARK
1	200-0001-00	SHOCK, front left	1	
2	0000-0000	SPRNG, gas front	1	
3	200-0001-00	SHOCK, front	1	
4	0000-0000	SPRNG	1	
5	0000-0000	SHOCK	20	
6	100-0001-00	SHOCK, left	1	
7	100-0001-00	SHOCK, left	1	
8	100-0001-00	SHOCK, left rear	1	
9	0000-0000	SHOCK	1	
10	100-0001-00	SHOCK, front	1	
11	0000-0000	SHOCK, front rear	1	
12	0000-0000	SHOCK	1	
13	0000-0000	SHOCK	1	
14	100-0001-00	SHOCK, front rear	1	100-0001-00
15	100-0001-00	SHOCK, left	1	

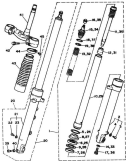




20000-0000

FIG. 28 FRONT VIEW

NO. NO.	PART NO.	DESCRIPTION	QTY	REMARKS
1	200-0000-00	FRONT FRAME BODY (L&R)	1	
2	200-0000-00	.TUBE, upper 1	1	
3	400-0000-00	.FLAT, brake	1	
4	100-0000-00	.JACKET, brake shoe	1	
5	000-0000-00	.RIB, strap	1	
6	200-0000-00	.SH, SH	1	
7	200-0000-00	.RIB, lower 1	1	
8	200-0000-00	.SH, SH	1	
9	400-0000-00	.JACKET, oil seal	1	
10	200-0000-00	.TUBE, SHOCK SPR., 1	1	
11	200-0000-00	.TUB, SHOCK SPR., front fork	1	
12	200-0000-00	.TUB, S., S.	1	
13	200-0000-00	.TUB, SHOCK SPR.	1	
14	000-0000-00	.JACKET	1	
15	000-0000-00	.SH, S., strap	1	
16	000-0000-00	.SH, SH, SH	1	
17	000-0000-00	.SH, SH, SHOCK SPR. SH	1	
18	200-0000-00	.JACKET	1	
19	200-0000-00	.JACKET, spring upper	1	
20	200-0000-00	FRONT FRAME BODY (L&R)	1	
21	200-0000-00	.TUBE, upper 2	1	
22	400-0000-00	.FLAT, brake	1	
23	100-0000-00	.JACKET, brake shoe	1	
24	000-0000-00	.RIB, strap	1	
25	200-0000-00	.SH, SH	1	
26	200-0000-00	.RIB, lower 2	1	
27	200-0000-00	.SH, SH	1	
28	400-0000-00	.JACKET, oil seal	1	



2000000000

FIG. 10. PARTS LIST

NO.	QTY.	DESCRIPTION	UNIT	REMARKS
1	1	HANDLE BODY (PART 1)	1	
2	1	SPRING (PART 2), HANDLE BODY	1	
3	1	HANDLE BODY, HANDLE	1	
4	1	HANDLE, HANDLE BODY	1	
5	1	HANDLE	1	
6	1	HANDLE, HANDLE	1	
7	1	HANDLE	1	
8	1	HANDLE, HANDLE	1	
9	1	HANDLE, HANDLE	1	
10	1	HANDLE, HANDLE	1	
11	1	HANDLE, HANDLE	1	
12	1	HANDLE, HANDLE	1	
13	1	HANDLE, HANDLE	1	
14	1	HANDLE, HANDLE	1	
15	1	HANDLE, HANDLE	1	
16	1	HANDLE, HANDLE	1	
17	1	HANDLE, HANDLE	1	
18	1	HANDLE, HANDLE	1	
19	1	HANDLE, HANDLE	1	
20	1	HANDLE, HANDLE	1	
21	1	HANDLE, HANDLE	1	
22	1	HANDLE, HANDLE	1	
23	1	HANDLE, HANDLE	1	
24	1	HANDLE, HANDLE	1	
25	1	HANDLE, HANDLE	1	
26	1	HANDLE, HANDLE	1	
27	1	HANDLE, HANDLE	1	
28	1	HANDLE, HANDLE	1	
29	1	HANDLE, HANDLE	1	
30	1	HANDLE, HANDLE	1	
31	1	HANDLE, HANDLE	1	
32	1	HANDLE, HANDLE	1	
33	1	HANDLE, HANDLE	1	
34	1	HANDLE, HANDLE	1	
35	1	HANDLE, HANDLE	1	
36	1	HANDLE, HANDLE	1	
37	1	HANDLE, HANDLE	1	
38	1	HANDLE, HANDLE	1	
39	1	HANDLE, HANDLE	1	
40	1	HANDLE, HANDLE	1	
41	1	HANDLE, HANDLE	1	
42	1	HANDLE, HANDLE	1	
43	1	HANDLE, HANDLE	1	
44	1	HANDLE, HANDLE	1	
45	1	HANDLE, HANDLE	1	

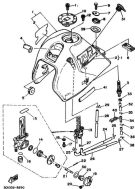


FIG. 26 FIG. 28B

REF. NO.	REF. NO.	DESCRIPTION	QTY	REMARKS
1	200-0070-00-00	FIG. 28B COM.	1	OR 200000-0000
	200-0070-00-00	FIG. 28B COM.	1	OR 200000-0000
2	200-0000-00	200000-00	1	OR 2000-00
	200-0000-00	200000-00	1	OR 2000-00
3	200-0100-00	2000-0100-00	1	
4	200-0100-00	2000-0100-00	1	
5	200-0100-00	2000-0100-00	1	
6	200-0100-00	2000-0100-00	1	
7	200-0100-00	2000-0100-00	1	
8	200-0100-00	2000-0100-00	1	
9	2000-0000	2000-0000	1	
10	200-0000-00	200-0000-00	1	
11	200-0000-00	2000-0000-00	1	
12	200-0000-00	2000-0000-00	1	
13	200-0000-00	2000-0000-00	1	
14	200-0000-00	2000-0000-00	1	
15	200-0000-00	2000-0000-00	1	
16	200-0000-00	2000-0000-00	1	
17	2000-0000	2000-0000	1	
18	2000-0000	2000-0000	1	
19	200-0000-00	2000-0000-00	1	
20	200-0000-00	2000-0000-00	1	
21	200-0000-00	2000-0000-00	1	
22	2000-0000	2000-0000	1	
23	200-0000-00	2000-0000-00	1	
24	200-0000-00	2000-0000-00	1	
25	2000-0000	2000-0000	1	
26	200-0000-00	2000-0000-00	1	

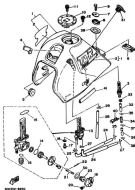


FIG. 26 PUMP HOUSING

REF. NO.	PART NO.	DESCRIPTION	QTY	REMARKS
27	90487-0003	CLIP	2	
28	130-0503-00	PIPE, 1	1	
29	90487-0004	CLIP	1	
30	210-0503-00	ORBITER 1	1	
31	070-0371-00	ROD, 1/2"	1	
32	90487-0075	WASHER	1	
33	90487-0005	CLIP	1	
34	070-0372-00	ROD, connector	1	
35	90487-0006	CLIP	1	
36	90487-0007	WASHER	1	
37	90487-0008	CLIP	1	
38	90487-0009	CLIP	1	
39	070-0475-00	SPACER 1	1	
40	90487-0010	CLAMP	1	
41	100-0503-00	WELL, Part 1000	1	

FIG. 26. SEAT

REF. NO.	PART NO.	DESCRIPTION	QTY	REMARKS
1	500-04750-01	DOUBLE SEAT BODY	1	OR YELLOW
	500-04750-01	DOUBLE SEAT BODY	1	OR GRAY
2	100-04750-00	.020IN. HOSE	1	OR YELLOW
	100-04750-00	.020IN. HOSE	1	OR GRAY
3	400-04750-00	.040IN. HOSE	2	
4	500-04750-00	SEAT LATCH BODY	1	
5	100-04750-00	PLATE	1	
6	5000-10000	WAX	2	
7	5000-10000	WAXES, spraying	2	
8	100-04750-00	WRL, seat foam	1	
9	100-04750-00	SEAT LATCH BODY	1	
10	5000-10000	WAXES, with cushion	2	
11	100-04750-00	WAX 1	1	
12	5000-10000	WAXES, spraying	2	
13	100-04750-00	WAX 2, 27	1	
14	400-04750-00	WAX, 24, 25, 26	1	
15	100-04750-00	WAXES, spraying	1	

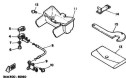


FIG. 26. SEAT

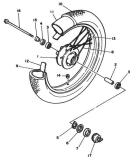


FIG. 37 FRONT WHEEL

REF. NO.	PART NO.	DESCRIPTION	QTY	REMARKS
1	276-0201-00	AXLE, front	1	
2	80001-0000	WHEEL NUT	1	
3	80004-0000	WHEEL LOCK	1	
4	80003-0000	WHEEL LOCK NUT	1	
5	541-0000-00	CLIPPER, wheel	1	
6	541-0000-00	WHEEL LOCK PLATE	1	
7	80000-0007	WHEEL LOCK PIN	1	
8	276-0000-00	WHEEL LOCK BOLT	1	
9	80001-0000	WHEEL LOCK NUT	1	
10	54100-0000	WHEEL LOCK WASHER	1	OR EQUIVALENT
11	80000-0000	WHEEL LOCK PLATE	1	OR EQUIVALENT
12	80000-0000	WHEEL LOCK PIN	1	OR EQUIVALENT
13	80000-0000	WHEEL LOCK BOLT	1	OR EQUIVALENT
14	80001-0000	WHEEL LOCK NUT	1	
15	541-0000-00	CLIPPER, wheel	1	
16	80001-0000	WHEEL LOCK NUT	1	
17	276-0000-00	WHEEL LOCK BOLT	1	

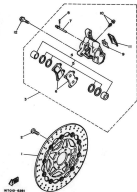


HONDA MOTOR



FIL. IN FRONT BRAKE CALIPER

QTY.	PART NO.	DESCRIPTION	QTY	REMARK
1	903-0500-00	FRONT BRAKE HOSE	1	
2	90000-00070	BOLT	2	
3	070-0500-00	CALIPER HOSE BUSHING	1	OLD
4	900-0000-00	FRONT HOSE, OUT SIDE	1	
5	900-0000-00	CLIPPER SIDE KIT	1	
6	900-0000-00	BRACE AND KIT	1	
7	907-0500-00	FIL. pad	2	
8	907-0500-00	CLIP	2	
9	907-0500-00	SUPPORT, pad	1	
10	120-0000-00	BRACE SCREW KIT	1	
11	907-0500-00	CLIPPER, side	1	
12	9000-0000	BOLT, center bracket	2	



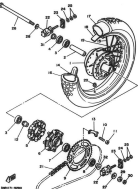


FIG. 24 MAIN MODEL

REF. NO.	PART NO.	DESCRIPTION	QTY	REMARKS
1	214-0001-00	WBL, rear	1	
2	001-0001-00	SPACER, bearing	1	
3	0000-0000	BEARING, BALL	2	
4	0000-0000	OL. SEAL	1	
5	001-0000-00	SCREW	6	
6	001-0000-00	CLUTCH, hub	1	
7	0000-0000	BEARING	1	
8	0010-0000	OL. SEAL	1	
9	000-0000-00	SWITCH, clutch (OFF)	1	
10	0010-0000	SOLE, rear	6	
11	0010-0000	WIP	6	
12	0000-0000	OL. SEAL	1	
13	001-0000-00	WIPPER	1	
14	0000-0000	WIP (2-10/11)	1	100%
15	001-0000-00	WIP (2-10/11)	1	
16	0010-0000	WIP (2-10/11) (2-10/11)	1	100% (2-10/11)
17	0010-0000	WIP (2-10/11)	1	100% (2-10/11)
18	0010-0000	WIP (2-10/11)	1	100% (2-10/11)
19	0010-0000	WIP (2-10/11)	1	100% (2-10/11)
20	0010-0000	WIP (2-10/11)	1	100% (2-10/11)
21	0010-0000	WIP (2-10/11)	1	100% (2-10/11)
22	0010-0000	WIP (2-10/11)	1	100% (2-10/11)
23	0010-0000	WIP (2-10/11)	1	100% (2-10/11)
24	0010-0000	WIP (2-10/11)	1	100% (2-10/11)
25	0010-0000	WIP (2-10/11)	1	100% (2-10/11)
26	0010-0000	WIP (2-10/11)	1	100% (2-10/11)

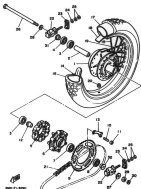


FIG. 26 2500 SERIES

REF. NO.	REF. NO.	DESCRIPTION	QTY	REMARKS
21	9000-10007	WHEEL, plate	1	
22	9000-10017	WHEEL, plate	1	
23	9000-10008	WGT	1	
24	9000-10009	WGT	1	
25	9000-10007	COLLAR	1	
26	9000-10008	COLLAR	1	

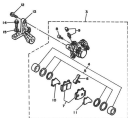


FIG. 10. NEW MODEL CALIPER

REF. NO.	PART NO.	DESCRIPTION	QTY	REMARKS
1	107-00001-00	BASE, brake	1	
2	5000-0070	WLT	2	
3	107-00002-00	SLIDER BODY, rear 2	1	1000
4	501-00004-00	LEADER BODY, caliper	1	
5	501-00003-01	LEADER SH, KIT	1	
6	501-00003-00	LEADER, pad	1	
7	501-00003-02	SHOCK PAD KIT, 2	1	
8	501-00003-00	SHOCK, pad	2	
9	501-00003-00	SHOCK SHOCK KIT	2	
10	474-00001-00	SHOCK, caliper	1	
11	474-00001-01	SHOCK, caliper	1	
12	5000-0000	WLT, washer (small)	2	
13	501-00003-00	SHOCK, caliper	1	
14	5000-0000	WLT, Flange	1	
15	5000-0000	WASHER, 2700	1	



107000-0000

D12

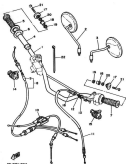


FIG. 2: WIRING HARNESS, CABLE

QTY.	PART NO.	DESCRIPTION	QTY	REMARKS
1	804-0001-00	WIRING HARNESS	1	
2	804-0001-00	WIRING HARNESS (LEFT)	1	
3	804-0001-00	WIRING HARNESS (RIGHT)	1	
4	804-0001-00	WIRING HARNESS (LEFT)	1	
5	804-0001-00	WIRING HARNESS	1	
6	804-0001-00	WIRING HARNESS	1	
7	804-0001-00	WIRING HARNESS	1	
8	804-0001-00	WIRING HARNESS	1	
9	804-0001-00	WIRING HARNESS	1	
10	804-0001-00	WIRING HARNESS	1	
11	804-0001-00	WIRING HARNESS	1	
12	804-0001-00	WIRING HARNESS	1	
13	804-0001-00	WIRING HARNESS	1	
14	804-0001-00	WIRING HARNESS	1	
15	804-0001-00	WIRING HARNESS	1	
16	804-0001-00	WIRING HARNESS	1	
17	804-0001-00	WIRING HARNESS	1	
18	804-0001-00	WIRING HARNESS	1	
19	804-0001-00	WIRING HARNESS	1	
20	804-0001-00	WIRING HARNESS	1	
21	804-0001-00	WIRING HARNESS	1	
22	804-0001-00	WIRING HARNESS	1	
23	804-0001-00	WIRING HARNESS	1	
24	804-0001-00	WIRING HARNESS	1	
25	804-0001-00	WIRING HARNESS	1	
26	804-0001-00	WIRING HARNESS	1	
27	804-0001-00	WIRING HARNESS	1	

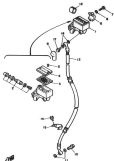


FIG. 17 REAR WHEEL ASSEMBLY

NO. CALL.	REF. NO.	DESCRIPTION	QTY	REMARKS
1	201-12001-01	WHEEL CYLINDER BODY	1	
2	401-40041-01	JCL. BUSH KIT, master	1	
3	401-12004-01	JCL. BUSH, rear wheel	1	
4	100-12003-01	CLIP, rear wheel	1	
5	10001-10010	WHEEL FLAT BUSH	1	
6	401-12007-01	SHOCK, master cylinder	1	
7	10010-10020	BOLT	2	
8	10000-10010	SHOCK, spring	1	
9	401-12002-01	BOLT, master cylinder	1	
10	10001-10000	BOLT, wheel	1	
11	10001-10010	SHOCK, plate	1	
12	10001-10001	SHOCK	1	
13	101-12001-01	WHEEL, brake 1	1	
14	10001-10010	BOLT	1	
15	101-12000-01	SHOCK, brake disc	1	
16	10001-10010	SHOCK, plate	1	
17	10001-10000	BOLT, wheel	1	

100000-0000

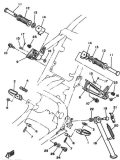
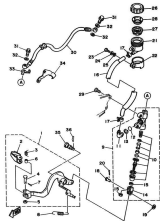


FIG. 20 ENGINE, FRONT

QTY	PART NO.	DESCRIPTION	QTY	REMARKS
1	024-02411-00-00	PISTONET 1	1	(RED-CRANK, BLACK)
2	024-02411-00	PISTONET 2	1	
3	0200-0200	SPRNG, return	1	
4	0200-0200	SPRNG, tension	1	
5	0200-0200	WASER, plate	1	
6	0100-0000	ITA, 1/2inch	2	
7	0100-0000	ITA, 1/4inch	2	
8	010-0201-00	BRACKET 1	1	
9	010-0202-00	BRACKET 2	1	
10	0000-0001	SCUT	4	
11	024-0203-00	PISTONET, rear 1	1	
12	024-0203-00	PISTON, rear threaded	1	
13	0000-0000	WASER, plate	1	
14	000-0202-00	SPRNG, spring	1	
15	0000-0000	ITA, 1/2inch	1	
16	0000-0000	WASER, plate	1	
17	0000-0000	ITA, 1/4inch	1	
18	024-0203-00	PISTON, rear	1	
19	0200-0200	SCUT	1	
20	0200-0200	SPRNG, tension	1	
21	020-0203-00	ITA, 1/2inch	1	
22	0000-0000	ITA, 1/4inch	1	
23	0000-0000	WASER, compression	1	
24	024-0203-00	SCUT	1	
25	0000-0200	SPRNG, rear	1	
26	0000-0200	WASER, plate	1	

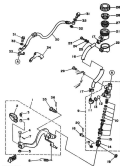


SAFETY-SEAL

FIG. 26 REAR WATER CYLINDER

REF. NO.	PART NO.	DESCRIPTION	QTY	REMARKS
1	275-2700-00	PLATE, base	1	
2	269-2700-00	PLATE, base	1	
3	90000-0044	SPRING, spring	1	
4	90700-00007	PLATE, plate	1	
5	90700-00000	SPRING, plate	1	
6	90007-00702	COIL, coil	1	
7	90000-00015	PLATE, plate	1	
8	90000-00000	SPRING, spring	1	
9	275-20000-00	REAR CYLINDER BODY	1	
10	275-00000-00	PLATE, PLATE, master	1	
11	275-20000-00	COIL, coil	1	
12	90000-00000	COIL, coil	1	
13	275-20000-00	COIL, coil	1	
14	275-20000-00	COIL, coil	1	
15	90000-00000	COIL, coil	1	
16	275-20000-00	COIL, coil	1	
17	275-20000-00	COIL, coil	1	
18	90000-00000	COIL, coil	1	
19	90000-00000	COIL, coil	1	
20	275-20000-00	COIL, coil	1	
21	275-20000-00	COIL, coil	1	
22	90000-00000	COIL, coil	1	
23	90000-00000	COIL, coil	1	
24	90000-00000	COIL, coil	1	
25	90000-00000	COIL, coil	1	
26	275-20000-00	COIL, coil	1	
27	275-20000-00	COIL, coil	1	
28	275-20000-00	COIL, coil	1	
29	275-20000-00	COIL, coil	1	
30	275-20000-00	COIL, coil	1	
31	275-20000-00	COIL, coil	1	
32	275-20000-00	COIL, coil	1	
33	275-20000-00	COIL, coil	1	
34	275-20000-00	COIL, coil	1	
35	275-20000-00	COIL, coil	1	
36	275-20000-00	COIL, coil	1	
37	275-20000-00	COIL, coil	1	
38	275-20000-00	COIL, coil	1	
39	275-20000-00	COIL, coil	1	
40	275-20000-00	COIL, coil	1	
41	275-20000-00	COIL, coil	1	
42	275-20000-00	COIL, coil	1	
43	275-20000-00	COIL, coil	1	
44	275-20000-00	COIL, coil	1	
45	275-20000-00	COIL, coil	1	
46	275-20000-00	COIL, coil	1	
47	275-20000-00	COIL, coil	1	
48	275-20000-00	COIL, coil	1	
49	275-20000-00	COIL, coil	1	
50	275-20000-00	COIL, coil	1	
51	275-20000-00	COIL, coil	1	
52	275-20000-00	COIL, coil	1	
53	275-20000-00	COIL, coil	1	
54	275-20000-00	COIL, coil	1	
55	275-20000-00	COIL, coil	1	
56	275-20000-00	COIL, coil	1	
57	275-20000-00	COIL, coil	1	
58	275-20000-00	COIL, coil	1	
59	275-20000-00	COIL, coil	1	
60	275-20000-00	COIL, coil	1	
61	275-20000-00	COIL, coil	1	
62	275-20000-00	COIL, coil	1	
63	275-20000-00	COIL, coil	1	
64	275-20000-00	COIL, coil	1	
65	275-20000-00	COIL, coil	1	
66	275-20000-00	COIL, coil	1	
67	275-20000-00	COIL, coil	1	
68	275-20000-00	COIL, coil	1	
69	275-20000-00	COIL, coil	1	
70	275-20000-00	COIL, coil	1	
71	275-20000-00	COIL, coil	1	
72	275-20000-00	COIL, coil	1	
73	275-20000-00	COIL, coil	1	
74	275-20000-00	COIL, coil	1	
75	275-20000-00	COIL, coil	1	
76	275-20000-00	COIL, coil	1	
77	275-20000-00	COIL, coil	1	
78	275-20000-00	COIL, coil	1	
79	275-20000-00	COIL, coil	1	
80	275-20000-00	COIL, coil	1	
81	275-20000-00	COIL, coil	1	
82	275-20000-00	COIL, coil	1	
83	275-20000-00	COIL, coil	1	
84	275-20000-00	COIL, coil	1	
85	275-20000-00	COIL, coil	1	
86	275-20000-00	COIL, coil	1	
87	275-20000-00	COIL, coil	1	
88	275-20000-00	COIL, coil	1	
89	275-20000-00	COIL, coil	1	
90	275-20000-00	COIL, coil	1	
91	275-20000-00	COIL, coil	1	
92	275-20000-00	COIL, coil	1	
93	275-20000-00	COIL, coil	1	
94	275-20000-00	COIL, coil	1	
95	275-20000-00	COIL, coil	1	
96	275-20000-00	COIL, coil	1	
97	275-20000-00	COIL, coil	1	
98	275-20000-00	COIL, coil	1	
99	275-20000-00	COIL, coil	1	
100	275-20000-00	COIL, coil	1	





Subject's name:

FIG. 20 BOLT ORDER FOR ENGINE

NO.	FIG. NO.	DESCRIPTION	QTY	REMARKS
01	0000-00010	WASHER	1	
02	010-00010-001	WASHER, 10mm x 5	1	
03	0000-00000	BOLT, 10mm	1	
04	0000-00010	WASHER, 10mm	1	
05	010-00010-001	WASHER, 10mm	1	
06	010-00010-001	WASHER, 10mm	1	
07	010-00010-001	WASHER, 10mm	1	
08	0000-00010	WASHER	1	

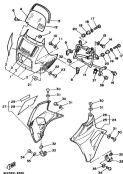
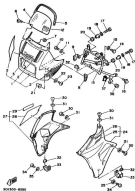


FIG. 10. CONTINUED

REF. NO.	PART NO.	DESCRIPTION	QTY	REMARKS
1	201-0000-00	SPR., front upper L	1	IN FRONT BULK
	201-0000-00	SPR., front upper R	1	IN FRONT BULK
2	201-0000-00	JOINT, LFT., seating	1	IN FTR FR
	201-0000-00	JOINT, RFT., seating	1	IN FTR FR
3	9000-0000	JOINT, pivot	1	IN FTR FR
	9000-0000	JOINT, pivot	1	IN FTR FR
4	001-0000-00	COVER	1	
5	001-0000-00	WALL 1	1	
6	0000-0000	COVER, head head	2	
7	0000-0000	LET, flange	2	
8	001-0000-00	WALL, plate 1	1	
9	001-0000-00	WALL, plate 2	1	
10	0000-0000	COVER, pin head	4	
11	0000-0000	COVER, plate	4	
12	001-0000-00	WALL, section	1	
13	001-0000-00	WALL 1	1	
14	0000-0000	LET	1	
15	0000-0000	COVER, plate	1	
16	0000-0000	LET, flange	2	
17	0000-0000	LET	2	
18	0000-0000	COVER, spring	2	
19	0000-0000	WALL	2	
20	0000-0000	COVER	2	
21	0000-0000	LET	4	
22	0000-0000	COVER, plate	4	
23	0000-0000	COVER	4	
24	001-0000-00	WALL, COVER/1	1	IN FRONT BULK
	001-0000-00	WALL, COVER/1	1	IN FRONT BULK



100-000-0000

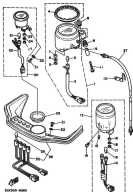
FIG. 10. (cont.)

REF. NO.	PART NO.	DESCRIPTION	QTY	REMARKS
21	001-0000-00	BRACKET 1	1	ON FOR 10
	001-0000-01	BRACKET 1	1	ON FOR 100
22	002-0000-00	BRACKET, plate	1	ON FOR 10
	002-0000-01	BRACKET, plate	1	ON FOR 100
23	003-0000-00	BRACKET, plate	1	ON FOR 100
	003-0000-01	BRACKET, plate	1	ON FOR 100
24	004-0000-00	BRACKET, plate	1	ON FOR 100
	004-0000-01	BRACKET, plate	1	ON FOR 100
25	005-0000-00	BRACKET, plate	1	ON FOR 100
	005-0000-01	BRACKET, plate	1	ON FOR 100
26	006-0000-00	BRACKET, plate	1	ON FOR 100
	006-0000-01	BRACKET, plate	1	ON FOR 100
27	007-0000-00	BRACKET, plate	1	ON FOR 100
	007-0000-01	BRACKET, plate	1	ON FOR 100
28	008-0000-00	BRACKET, plate	1	ON FOR 100
	008-0000-01	BRACKET, plate	1	ON FOR 100
29	009-0000-00	BRACKET, plate	1	ON FOR 100
	009-0000-01	BRACKET, plate	1	ON FOR 100
30	010-0000-00	BRACKET, plate	1	ON FOR 100
	010-0000-01	BRACKET, plate	1	ON FOR 100
31	011-0000-00	BRACKET, plate	1	ON FOR 100
	011-0000-01	BRACKET, plate	1	ON FOR 100
32	012-0000-00	BRACKET, plate	1	ON FOR 100
	012-0000-01	BRACKET, plate	1	ON FOR 100
33	013-0000-00	BRACKET, plate	1	ON FOR 100
	013-0000-01	BRACKET, plate	1	ON FOR 100
34	014-0000-00	BRACKET, plate	1	ON FOR 100
	014-0000-01	BRACKET, plate	1	ON FOR 100
35	015-0000-00	BRACKET, plate	1	ON FOR 100
	015-0000-01	BRACKET, plate	1	ON FOR 100
36	016-0000-00	BRACKET, plate	1	ON FOR 100
	016-0000-01	BRACKET, plate	1	ON FOR 100
37	017-0000-00	BRACKET, plate	1	ON FOR 100
	017-0000-01	BRACKET, plate	1	ON FOR 100



FIG. 16. REAR WHEEL

REF. NO.	PART NO.	DESCRIPTION	Q'TY	REMARKS
1	270-0000-00	SHOCK ABOR	1	
2	270-0000-00	COIL, SPRING	1	
3	270-0000-00	SHOCK ABOR	1	
4	1000-0000	SCREW, PAN HEAD	1	
5	1000-0000	WASHER, SPRING	1	
6	1000-0000	SCREW, PAN HEAD	1	
7	1000-0000	WASHER, SPRING	1	
8	1000-0000	WASHER, PLATE	1	
9	1000-0000	SCREW, PAN HEAD	1	
10	1000-0000	WASHER, PLATE	1	



50X300-50MM

FIG. 26 REAR

REF. NO.	PART NO.	DESCRIPTION	QTY	REMARKS
1	32L-0000-00	SPRINGER ASSY	1	
2	400-0004-00	WHL, 15X7-5.00	1	
3	32L-0000-00	SHOCK ASSY	1	
4	140-0003-00	SWAYR	1	
5	0000-0000	WHL	1	
6	0000-0000	WHL, 15X7-5.00	1	
7	100-0003-00	SWAYR	1	
8	140-0003-00	SWAYR	1	
9	0000-0000	WHL	1	
10	0000-0000	WHL, 15X7-5.00	1	
11	0000-0000	WHL	1	
12	0000-0000	WHL, 15X7-5.00	1	
13	0000-0000	WHL, 15X7-5.00	1	
14	0000-0000	WHL, 15X7-5.00	1	
15	0000-0000	WHL, 15X7-5.00	1	
16	0000-0000	WHL, 15X7-5.00	1	
17	0000-0000	WHL, 15X7-5.00	1	
18	0000-0000	WHL, 15X7-5.00	1	
19	0000-0000	WHL, 15X7-5.00	1	
20	0000-0000	WHL, 15X7-5.00	1	
21	0000-0000	WHL, 15X7-5.00	1	
22	0000-0000	WHL, 15X7-5.00	1	
23	0000-0000	WHL, 15X7-5.00	1	
24	0000-0000	WHL, 15X7-5.00	1	
25	0000-0000	WHL, 15X7-5.00	1	
26	0000-0000	WHL, 15X7-5.00	1	
27	0000-0000	WHL, 15X7-5.00	1	
28	0000-0000	WHL, 15X7-5.00	1	

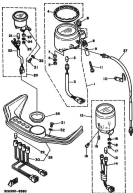
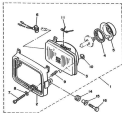
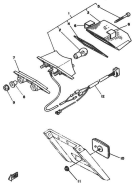


FIG. 10. FUEL

REF. NO.	PART NO.	DESCRIPTION	QTY	REMARKS
09	112-0000-01	NOSE FUEL PUMP	1	
10	170-0000-01	NOSE FUEL FILTER	1	
11	0000-0000	NOSE, fuel tank	1	
12	0000-0000	NOSE, plate	1	



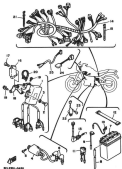
REF. NO.	PART NO.	DESCRIPTION	QTY	REMARKS
1	800-0000-00	HEAD LAMP UNIT ASSY	1	
2	470-0000-00	LAMP, headlight	1	
3	800-0000-00	LAMP ASSY	1	
4	870-0000-00	FLYING PLATE, bulb	1	
5	870-0000-00	COVER, bulb	1	
6	80-0000-00	SCREW, ph. for light	1	
7	8000-0000	SCREW, hexagon rubber head	2	
8	8000-0000	SCREW, (spec. 4)	2	
9	8000-0000	SCREW, rubber	2	
10	8000-0000	SCREW, rubber	2	
11	8000-0000	SCREW, rubber	1	
12	8000-0000	SCREW (1/2"-10-32)	1	REMARKS
13	8000-0000	SCREW (1/2"-10-32)	1	
14	80-10-1000	SCREW	2	
15	8000-0000	SCREW	2	
16	8000-0000	SCREW	2	
17	8000-0000	SCREW, hexagonal	1	



BOX900-0400

FIG. 00 TABLET

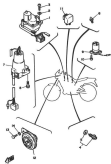
REF. NO.	PART NO.	DESCRIPTION	QTY	REMARKS
1	001-0010-01	TABLET, left side	1	
2	001-0010-02	TABLET, right side	1	
3	001-0010-03	TABLET, left side	1	
4	001-0010-04	TABLET, right side	1	
5	001-0010-05	TABLET, left side	1	
6	001-0010-06	TABLET, right side	1	
7	001-0010-07	TABLET, left side	1	
8	001-0010-08	TABLET, right side	1	
9	001-0010-09	TABLET, left side	1	
10	001-0010-10	TABLET, right side	1	
11	001-0010-11	TABLET, left side	1	
12	001-0010-12	TABLET, right side	1	



ADR250-0400

FIG. 10 BATTERY 1

QTY.	PART NO.	DESCRIPTION	QTY	REMARKS
1	270-0000-00	E.S.S., BATT. ASST	1	
2	9000-0000	WGT	2	
3	9000-0000	WHEEL, WGT	2	
4	200-0000-00	CONTRACT CABLE ASST	1	
5	9000-0000	WGT	2	
6	270-0000-00	FLUX CAP ASST	2	WITH WHEEL CONNECTION
7	400-0000-00	BATTERY ASST (CABLE-00)	1	
8	9000-0000	WGT	1	
9	9000-0000	WHEEL, FLUX WGT	1	
10	400-0000-00	WHEEL, FLUX WGT	1	
11	010-0000-00	CONTRACT BATTERY ASST	1	
12	400-0000-00	WGT	1	
13	270-0000-00	FLUX BATTERY ASST	1	
14	010-0000-00	WGT BATTERY ASST	1	
15	400-0000-01	WGT, FLUX WGT	1	
16	470-0000-00	BATTERY ASST & BATTERY ASST	1	
17	9000-0000	WGT	1	
18	270-0000-00	WGT, E.S.S., WGT	1	
19	9000-0000	WGT, FLUX	2	
20	9000-0000	FLUX	1	
21	400-0000-01	WGT, FLUX WGT	1	
22	400-0000-00	WGT, FLUX WGT	1	
23	9000-0000	WGT, FLUX WGT	1	
24	400-0000-00	WGT, FLUX WGT	1	
25	270-0000-00	WGT, FLUX WGT	1	



2000-2000

FIG. 40: ELECTRICAL 2

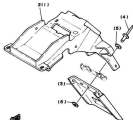
REF. NO.	PART NO.	DESCRIPTION	QTY	REMARKS
1	107-10001-00	COIL-MOTOR-IGN	1	
2	10001-10001	SPARK PLUG	2	
3	10001-10001	SCREW, 20x1.4x40	2	
4	107-10001-00	IGNITION SWITCH-IGN	1	
5	107-10001-00	IGNITION	1	
6	107-10001-00	IGNITION	1	
7	107-10001-00	IGNITION SWITCH-IGN	1	
8	10001-10001	IGNITION	2	
9	107-10001-00	IGNITION SWITCH-IGN	1	
10	107-10001-00	IGNITION	2	
11	107-10001-00	IGNITION SWITCH-IGN	1	
12	107-10001-00	IGNITION	1	
13	107-10001-00	IGNITION	1	
14	107-10001-00	IGNITION	1	

FOR BELGIUM

The following pages provides a listing of only the parts that meet the specifications peculiar to your market. For those parts not appearing in these pages, refer to the "GENERAL SPEC" section.

FIG. 48 ALTERNATE (CONTINUED)

REF. NO.	PART NO.	DESCRIPTION	QTY	REMARKS
1	322-11621-00	FENDER, rear	4	
2	115-11621-00	FENDER, rear	1	
3	322-11621-00	FLAP	4	
4	80047-80049	SCREW, blind	4	
5	80051-04443	WASHER, plate	4	
6	879-00110-00	BRACKET, reflector 1	1	
7	80047-01146	SCREW, blind	2	
8	80051-00040	WASHER, plate	1	



80050-84410

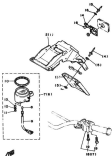
R For dimensions of reference

Designate the type selected (P) in the "QTY" column. These are intended for: COMBIL, SPEC, and (S) for INDIVIDUAL, SPEC.

F2

FOR ENGLAND

The following pages provides a listing of only the parts that meet the specifications peculiar to your market. For those parts not appearing in these pages, refer to the "GENERAL SPEC" section.



000000-0000

FIG. 10. ACCESSORIES

REF. NO.	PART NO.	DESCRIPTION	QTY	REMARKS
1	001-0001-00	RECORD, 100'	1	
2	001-0002-00	RECORD, 100'	1	
3	001-0003-00	FLAT	1	
4	001-0004-00	RECORD, 100'	1	
5	001-0005-00	RECORD, 100'	1	
6	001-0006-00	RECORD, 100'	1	
7	001-0007-00	RECORD, 100'	1	
8	001-0008-00	RECORD, 100'	1	
9	001-0009-00	RECORD, 100'	1	
10	001-0010-00	RECORD, 100'	1	
11	001-0011-00	RECORD, 100'	1	
12	001-0012-00	RECORD, 100'	1	
13	001-0013-00	RECORD, 100'	1	
14	001-0014-00	RECORD, 100'	1	
15	001-0015-00	RECORD, 100'	1	
16	001-0016-00	RECORD, 100'	1	
17	001-0017-00	RECORD, 100'	1	
18	001-0018-00	RECORD, 100'	1	
19	001-0019-00	RECORD, 100'	1	
20	001-0020-00	RECORD, 100'	1	
21	001-0021-00	RECORD, 100'	1	
22	001-0022-00	RECORD, 100'	1	
23	001-0023-00	RECORD, 100'	1	
24	001-0024-00	RECORD, 100'	1	
25	001-0025-00	RECORD, 100'	1	
26	001-0026-00	RECORD, 100'	1	
27	001-0027-00	RECORD, 100'	1	
28	001-0028-00	RECORD, 100'	1	
29	001-0029-00	RECORD, 100'	1	
30	001-0030-00	RECORD, 100'	1	

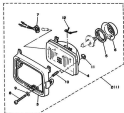
1. For recording of objects.

2. For recording of objects. 3. For recording of objects. 4. For recording of objects. 5. For recording of objects. 6. For recording of objects. 7. For recording of objects. 8. For recording of objects. 9. For recording of objects. 10. For recording of objects. 11. For recording of objects. 12. For recording of objects. 13. For recording of objects. 14. For recording of objects. 15. For recording of objects. 16. For recording of objects. 17. For recording of objects. 18. For recording of objects. 19. For recording of objects. 20. For recording of objects. 21. For recording of objects. 22. For recording of objects. 23. For recording of objects. 24. For recording of objects. 25. For recording of objects. 26. For recording of objects. 27. For recording of objects. 28. For recording of objects. 29. For recording of objects. 30. For recording of objects.

F4

FIG. 46 ALTERNATE ELECTRICALS

REF. NO.	PART NO.	DESCRIPTION	QTY	REMARKS
1	32-4800-00	HEAD LIGHT BOLT 1/2"	4	
2	014-4800-00	HEAD LIGHT BOLT 1/2"	1	
3	470-4800-00	.016, head light	1	
4	014-4800-00	.020, head	1	
5	076-4800-00	.F17 200 PLATE, 1/16	1	
6	076-4800-00	.0200, washer	1	
7	04-4804-00	.00021, of hot light	1	
8	00 10-00 07	.0017, hexagon socket head	1	
9	32-4807-00	.00000, special	1	
10	00 4800-00	.00000, screw	1	
11	00-4800-00	.001, adjust lug	1	
12	00-4800-00	.00000, reflector	1	
13	076-4800-00	000 (10-480000)	1	WASHER
14	32-4800-00	000 (10-1.00)	1	



* For quantities of alternate

Obtain the item number (F1) in the "QTY" column. Then we needed for 000000, 0001, and 0002 for 00000000, 0001

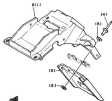
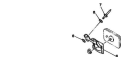
F5

FOR ITALY

The following pages provides a listing of only the parts that meet the specifications peculiar to your market. For these parts not appearing in these pages, refer to the "GENERAL SPEC" section.

FIG. 47 ALTERNATE COMPONENTS

REF. NO.	PART NO.	DESCRIPTION	QTY	REMARKS
1	800-25013-00	FENDER, rear	1	
2	210-25013-00	FENDER, rear	1	
3	800-25023-00	FLAT	1	
4	80023-0000	LIGHT, side	1	
5	80023-0000	WIPER, glass	1	
6	800023-0-00	BRACKET, reflector 1	1	
7	80023-00-00	LIGHT, side	2	
8	80023-00-00	WIPER, glass	2	



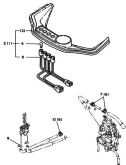
1 For dimensions of reference

Designed by the manufacturer (F) or by "FOT" vehicle. They are intended for reference, and not for the manufacturer (FOT).

F7

FOR SWEDEN

The following pages provides a listing of only the parts that meet the specifications peculiar to your market. For those parts not appearing in these pages, refer to the "GENERAL SPEC" section.




 100-0000-0-000

FIG. 10 ALTERNATE

REF. NO.	PART NO.	DESCRIPTION	QTY	REMARKS
1	100-0000-00	FRONT END*	1	
2	100-0000-00	FRONT END*	1	
3	100-0000-00	FRONT END, upper	1	
4	100-0000-00	FRONT END, lower	1	
5	100-0000-00	FRONT END, lower	1	
6	1000-1000	QTY	1	
7	1000-1000	QTY	1	
8	1000-1000	QTY	1	
9	1000-1000	QTY	1	
10	1000-1000	QTY	1	

* For replacement of reference

(changed for replacement of 1) in the "QTY" column. These are needed for
 (10000, 1000, and 1000) for replacement of 1000.



FOR NORWAY

The following pages provides a listing of only the parts that meet the specifications peculiar to your market. For those parts not appearing in these pages, refer to the "GENERAL SPEC" section.

INDEX

(GENERAL SPEC.)

[illegible]

INDEX

(INDIVIDUAL SPEC.)

		REMARKS		TIME					
PORT NO.	DATE	PORT NO.	DATE	PORT NO.	DATE	PORT NO.	DATE	PORT NO.	DATE
1001-1002	01	1003-1004	02	1005-1006	03	1007-1008	04	1009-1010	05
1011-1012	06	1013-1014	07	1015-1016	08	1017-1018	09	1019-1020	10
1021-1022	11	1023-1024	12	1025-1026	13	1027-1028	14	1029-1030	15
1031-1032	16	1033-1034	17	1035-1036	18	1037-1038	19	1039-1040	20
1041-1042	21	1043-1044	22	1045-1046	23	1047-1048	24	1049-1050	25
1051-1052	26	1053-1054	27	1055-1056	28	1057-1058	29	1059-1060	30
1061-1062	31	1063-1064	01	1065-1066	02	1067-1068	03	1069-1070	04
1071-1072	05	1073-1074	06	1075-1076	07	1077-1078	08	1079-1080	09
1081-1082	10	1083-1084	11	1085-1086	12	1087-1088	13	1089-1090	14
1091-1092	15	1093-1094	16	1095-1096	17	1097-1098	18	1099-1100	19
1101-1102	20	1103-1104	21	1105-1106	22	1107-1108	23	1109-1110	24
1111-1112	25	1113-1114	26	1115-1116	27	1117-1118	28	1119-1120	29
1121-1122	30	1123-1124	31	1125-1126	01	1127-1128	02	1129-1130	03
1131-1132	04	1133-1134	05	1135-1136	06	1137-1138	07	1139-1140	08
1141-1142	09	1143-1144	10	1145-1146	11	1147-1148	12	1149-1150	13
1151-1152	14	1153-1154	15	1155-1156	16	1157-1158	17	1159-1160	18
1161-1162	19	1163-1164	20	1165-1166	21	1167-1168	22	1169-1170	23
1171-1172	24	1173-1174	25	1175-1176	26	1177-1178	27	1179-1180	28
1181-1182	29	1183-1184	30	1185-1186	31	1187-1188	01	1189-1190	02
1191-1192	03	1193-1194	04	1195-1196	05	1197-1198	06	1199-1200	07
1201-1202	08	1203-1204	09	1205-1206	10	1207-1208	11	1209-1210	12
1211-1212	13	1213-1214	14	1215-1216	15	1217-1218	16	1219-1220	17
1221-1222	18	1223-1224	19	1225-1226	20	1227-1228	21	1229-1230	22
1231-1232	23	1233-1234	24	1235-1236	25	1237-1238	26	1239-1240	27
1241-1242	28	1243-1244	29	1245-1246	30	1247-1248	31	1249-1250	01
1251-1252	02	1253-1254	03	1255-1256	04	1257-1258	05	1259-1260	06
1261-1262	07	1263-1264	08	1265-1266	09	1267-1268	10	1269-1270	11
1271-1272	12	1273-1274	13	1275-1276	14	1277-1278	15	1279-1280	16
1281-1282	17	1283-1284	18	1285-1286	19	1287-1288	20	1289-1290	21
1291-1292	22	1293-1294	23	1295-1296	24	1297-1298	25	1299-1300	26
1301-1302	27	1303-1304	28	1305-1306	29	1307-1308	30	1309-1310	31
1311-1312	01	1313-1314	02	1315-1316	03	1317-1318	04	1319-1320	05
1321-1322	06	1323-1324	07	1325-1326	08	1327-1328	09	1329-1330	10
1331-1332	11	1333-1334	12	1335-1336	13	1337-1338	14	1339-1340	15
1341-1342	16	1343-1344	17	1345-1346	18	1347-1348	19	1349-1350	20
1351-1352	21	1353-1354	22	1355-1356	23	1357-1358	24	1359-1360	25
1361-1362	26	1363-1364	27	1365-1366	28	1367-1368	29	1369-1370	30
1371-1372	31	1373-1374	01	1375-1376	02	1377-1378	03	1379-1380	04
1381-1382	05	1383-1384	06	1385-1386	07	1387-1388	08	1389-1390	09
1391-1392	10	1393-1394	11	1395-1396	12	1397-1398	13	1399-1400	14
1401-1402	15	1403-1404	16	1405-1406	17	1407-1408	18	1409-1410	19
1411-1412	20	1413-1414	21	1415-1416	22	1417-1418	23	1419-1420	24
1421-1422	25	1423-1424	26	1425-1426	27	1427-1428	28	1429-1430	29
1431-1432	30	1433-1434	31	1435-1436	01	1437-1438	02	1439-1440	03
1441-1442	04	1443-1444	05	1445-1446	06	1447-1448	07	1449-1450	08
1451-1452	09	1453-1454	10	1455-1456	11	1457-1458	12	1459-1460	13
1461-1462	14	1463-1464	15	1465-1466	16	1467-1468	17	1469-1470	18
1471-1472	19	1473-1474	20	1475-1476	21	1477-1478	22	1479-1480	23
1481-1482	24	1483-1484	25	1485-1486	26	1487-1488	27	1489-1490	28
1491-1492	29	1493-1494	30	1495-1496	31	1497-1498	01	1499-1500	02
1501-1502	03	1503-1504	04	1505-1506	05	1507-1508	06	1509-1510	07
1511-1512	08	1513-1514	09	1515-1516	10	1517-1518	11	1519-1520	12
1521-1522	13	1523-1524	14	1525-1526	15	1527-1528	16	1529-1530	17
1531-1532	18	1533-1534	19	1535-1536	20	1537-1538	21	1539-1540	22
1541-1542	23	1543-1544	24	1545-1546	25	1547-1548	26	1549-1550	27
1551-1552	28	1553-1554	29	1555-1556	30	1557-1558	31	1559-1560	01
1561-1562	02	1563-1564	03	1565-1566	04	1567-1568	05	1569-1570	06
1571-1572	07	1573-1574	08	1575-1576	09	1577-1578	10	1579-1580	11
1581-1582	12	1583-1584	13	1585-1586	14	1587-1588	15	1589-1590	16
1591-1592	17	1593-1594	18	1595-1596	19	1597-1598	20	1599-1600	21
1601-1602	22	1603-1604	23	1605-1606	24	1607-1608	25	1609-1610	26
1611-1612	27	1613-1614	28	1615-1616	29	1617-1618	30	1619-1620	31
1621-1622	01	1623-1624	02	1625-1626	03	1627-1628	04	1629-1630	05
1631-1632	06	1633-1634	07	1635-1636	08	1637-1638	09	1639-1640	10
1641-1642	11	1643-1644	12	1645-1646	13	1647-1648	14	1649-1650	15
1651-1652	16	1653-1654	17	1655-1656	18	1657-1658	19	1659-1660	20
1661-1662	21	1663-1664	22	1665-1666	23	1667-1668	24	1669-1670	25
1671-1672	26	1673-1674	27	1675-1676	28	1677-1678	29	1679-1680	30
1681-1682	31	1683-1684	01	1685-1686	02	1687-1688	03	1689-1690	04
1691-1692	05	1693-1694	06	1695-1696	07	1697-1698	08	1699-1700	09
1701-1702	10	1703-1704	11	1705-1706	12	1707-1708	13	1709-1710	14
1711-1712	15	1713-1714	16	1715-1716	17	1717-1718	18	1719-1720	19
1721-1722	20	1723-1724	21	1725-1726	22	1727-1728	23	1729-1730	24
1731-1732	25	1733-1734	26	1735-1736	27	1737-1738	28	1739-1740	29
1741-1742	30	1743-1744	31	1745-1746	01	1747-1748	02	1749-1750	03
1751-1752	04	1753-1754	05	1755-1756	06	1757-1758	07	1759-1760	08
1761-1762	09	1763-1764	10	1765-1766	11	1767-1768	12	1769-1770	13
1771-1772	14	1773-1774	15	1775-1776	16	1777-1778	17	1779-1780	18
1781-1782	19	1783-1784	20	1785-1786	21	1787-1788	22	1789-1790	23
1791-1792	24	1793-1794	25	1795-1796	26	1797-1798	27	1799-1800	28
1801-1802	29	1803-1804	30	1805-1806	31	1807-1808	01	1809-1810	02
1811-1812	03	1813-1814	04	1815-1816	05	1817-1818	06	1819-1820	07
1821-1822	08	1823-1824	09	1825-1826	10	1827-1828	11	1829-1830	12
1831-1832	13	1833-1834	14	1835-1836	15	1837-1838	16	1839-1840	17
1841-1842	18	1843-1844	19	1845-1846	20	1847-1848	21	1849-1850	22
1851-1852	23	1853-1854	24	1855-1856	25	1857-1858	26	1859-1860	27
1861-1862	28	1863-1864	29	1865-1866	30	1867-1868	31	1869-1870	01
1871-1872	02	1873-1874	03	1875-1876	04	1877-1878	05	1879-1880	06
1881-1882	07	1883-1884	08	1885-1886	09	1887-1888	10	1889-1890	11
1891-1892	12	1893-1894	13	1895-1896	14	1897-1898	15	1899-1900	16
1901-1902	17	1903-1904	18	1905-1906	19	1907-1908	20	1909-1910	21
1911-1912	22	1913-1914	23	1915-1916	24	1917-1918	25	1919-1920	26
1921-1922	27	1923-1924	28	1925-1926	29	1927-1928	30	1929-1930	31
1931-1932	01	1933-1934	02	1935-1936	03	1937-1938	04	1939-1940	05
1941-1942	06	1943-1944	07	1945-1946	08	1947-1948	09	1949-1950	10
1951-1952	11	1953-1954	12	1955-1956	13	1957-1958	14	1959-1960	15
1961-1962	16	1963-1964	17	1965-1966	18	1967-1968	19	1969-1970	20
1971-1972	21	1973-1974	22	1975-1976	23	1977-1978	24	1979-1980	25
1981-1982	26	1983-1984	27	1985-1986	28	1987-1988	29	1989-1990	30
1991-1992	31	1993-1994	01	1995-1996	02	1997-1998	03	1999-2000	04
2001-2002	05	2003-2004	06	2005-2006	07	2007-2008	08	2009-2010	09
2011-2012	10	2013-2014	11	2015-2016	12	2017-2018	13	2019-2020	14
2021-2022	15	2023-2024	16	2025-2026	17	2027-2028	18	2029-2030	19
2031-2032	20	2033-2034	21	2035-2036	22	2037-2038	23	2039-2040	24
2041-2042	25	2043-2044	26	2045-2046	27	2047-2048	28	2049-2050	29
2051-2052	30	2053-2054	31	2055-2056	01	2057-2058	02	2059-2060	03
2061-2062	04	2063-2064	05	2065-2066	06	2067-2068	07	2069-2070	08
2071-2072	09	2073-2074	10	2075-2076	11	2077-2078	12	2079-2080	13
2081-2082	14	2083-2084	15	2085-2086	16	2087-2088	17	2089-2090	18
2091-2092	19	2093-2094	20	2095-2096	21				